



Designed by **experts**
for use by **professionals**

The AF Range™ - a new generation of
innovative pest control products

The AF Range™



Killgerm and the AF Range™

Killgerm Group is Europe's largest distributor of pest control products with its headquarters in the UK and companies in Germany, the Benelux and Spain. Experts in pest control distribution for over 110 years, Killgerm began manufacturing the AF Range™ for the European market in 2002.

The principle behind the AF Range™ is to produce added value products at a competitive price. These have been developed by Paul Hoyes, Killgerm's product development manager. Paul has been with the company since 2001 and brings with him over 17 years of experience.

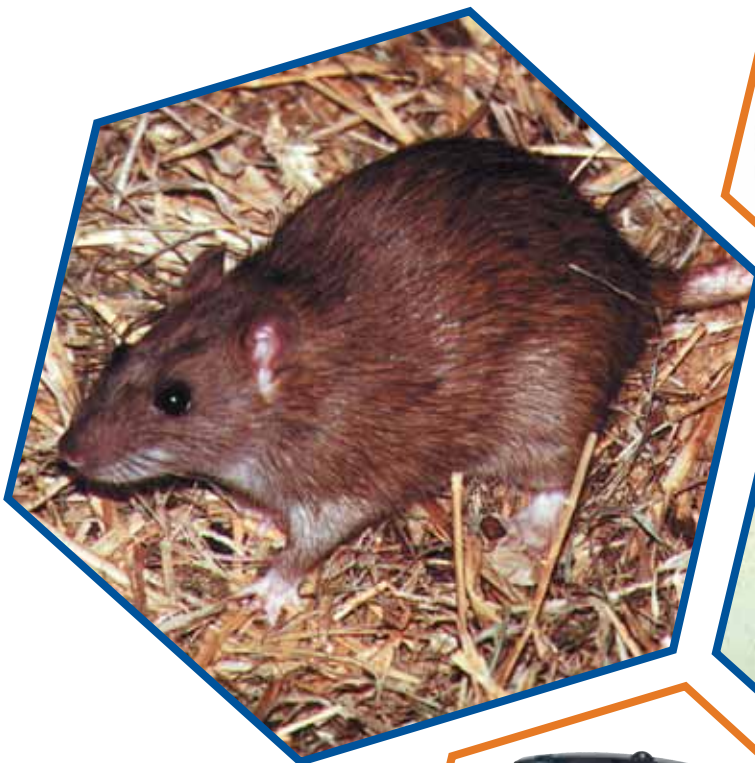
Paul designed the range using his own experience of being a pest management professional and building on the experience of Killgerm's customers, whom Killgerm believe understand the trade better than anyone.



Designed with functionality and ease of service in mind, the AF Range™ incorporates many unique features.

Feedback from customers is invaluable and many of the features included in the products are a result of customer comments. This is what makes the AF Range™ of rodent control products and monitoring tools the best on the market.

By working together with Pest IT PTY Ltd, Killgerm now has the opportunity to offer its world class product range in Australia. The technical knowledge and expertise of Peter McCarthy will allow him to provide an excellent service to Australian customers.



The AF Rat Box

The most versatile box with many unique features

- Detachable lid for ease of servicing and record keeping
- Removable lid makes cleaning easier
- Unique locks for added security
- Front-facing locks reduce the risk of blockage from debris
- Several securing options available aiding due diligence
- All common formulations can be used allowing a wide choice of rodenticides
- Feeding chamber can hold up to a kilo of bait



Protected lock for added strength and water proofing



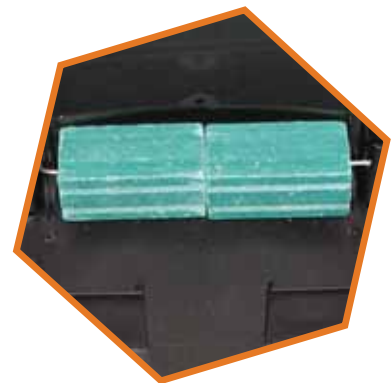
- Can be used with break-back traps and liquid feeders
- Protected lock enhancing tamper resistance
- Tripod foot configuration aids stability
- Dimensions H: 105mm x W: 355mm x D: 255mm
- Universal stainless steel key fits all AF boxes
- Combined key/cleaning brush is an optional extra
- Corporate printing available



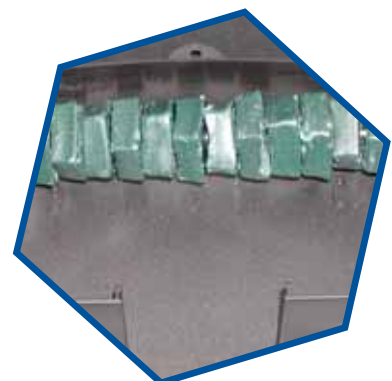
Patents applied for

AF Rat Box - Additional features

- Improved locking mechanism making opening box easier
- Water deflection barriers in the entrance of the tunnel, together with the additional drainage holes, mean that driven rain is more readily channelled away from the bait chamber
- Ribs have been extended down from the lid to interface with the internal walls. This enhances tamper resistance and adds to the box's strength
- Metal bait rod:
 - The metal rods make treatment even more secure, enhancing the security of the baits in the box
 - The box is now even more versatile, taking every bait block with holes on the market
 - The bait capacity of the box is increased because the metal rod can be used in conjunction with the vertical rods; ideal for large infestations
- Enlarged vertical support lugs on the inside of the lid to provide a more positive capture area for vertical rods
- An additional security feature secures the lid to the box. It will take a small padlock or cable tie, which further enhances tamper resistance



**Additional security fixing for
cable ties and small padlocks**



Patents applied for

The AF Tuffbox™ Rat Box

For extra 'tuffness'

- All the features of the AF Rat Box but made from super tough material giving the strength of rust-free metal and the rodent-friendly feel of plastic
- Designed to be used where an extra secure bait box is required in sensitive areas
- Will withstand high impact with minimal damage
- Suitable for a wider range of temperatures: -40°C to +60°C
- Colour coded in dark green for identification
- Universal stainless steel key fits all AF boxes
- Combined key/cleaning brush available as optional extra
- Corporate printing available



**EXTRA
STRONG!**

The AF Tuffbox™ car trials

Won't crack under pressure

The AF TuffBox™ incurred minimal damage when it was driven over by a VW Passat. The box remained fully operational with only slight damage to the internal walls.

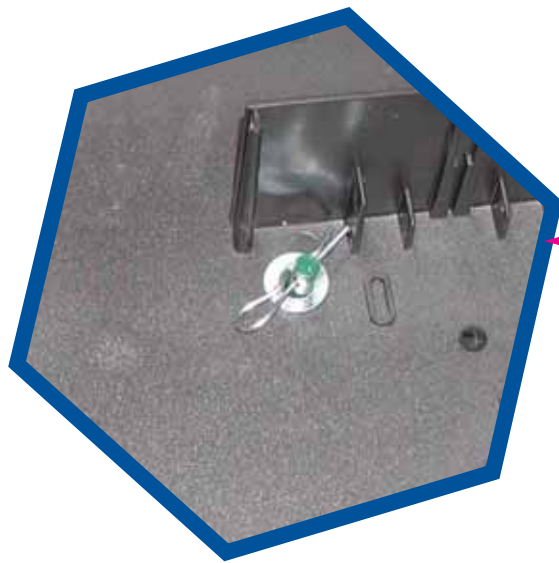


Patents applied for

The AF Rat Box accessories

AF Rat Box Liner

The AF Rat Box Liner is a useful accessory that fits neatly into the station. When used in conjunction with the AF Rat Box, it enables the box to be cleaned easily and assists quick servicing when using grain baits. Additionally this liner can be used when the metal bait rod is used.

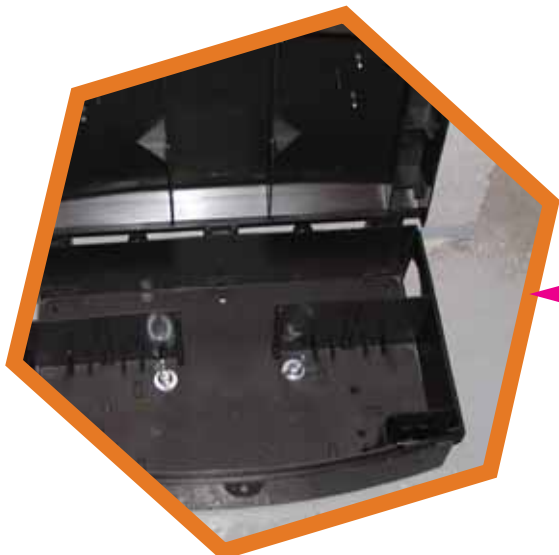
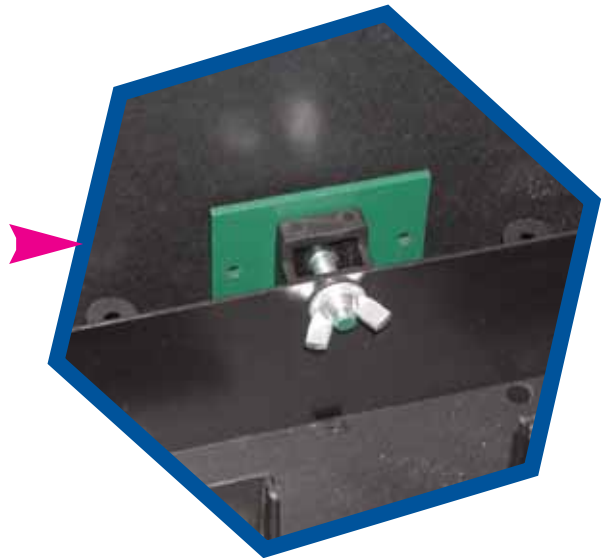


AF Rat Box - Bait Station Anchor

Ideal for fixing the rat box into soft ground, it can be hammered into position using one of the pre-drilled holes in the base.

AF Rat Box - Bait Station Peg

The bait station peg can be used as a base fixing, locating through the holes provided. Alternatively it can be used as a wall fixing by drilling a 10mm hole through the centre pillar along the cut line indicated.

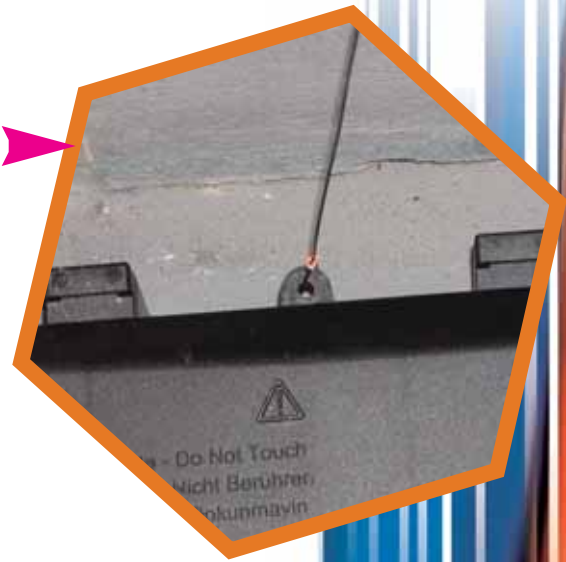


AF Rat Box - No 14 Floor Fixing Bracket

When high security is required, this secure and robust floor fixing is ideal. Use the two holes pre-drilled in the base as indicated.

AF Rat Box - Cable Fixing

When fixing brackets are not appropriate, this quick and easy fixing method is ideal. Attach one end of 1.2mm wire rope (NET149) to the bait box as indicated and attach the other end to a wall, fence etc. (Crimps (NET079) and crimping pliers (BIR018) will be needed for this fixing method). Leave enough wire to allow the box to be lifted and serviced during inspection, usually 40-50cm.

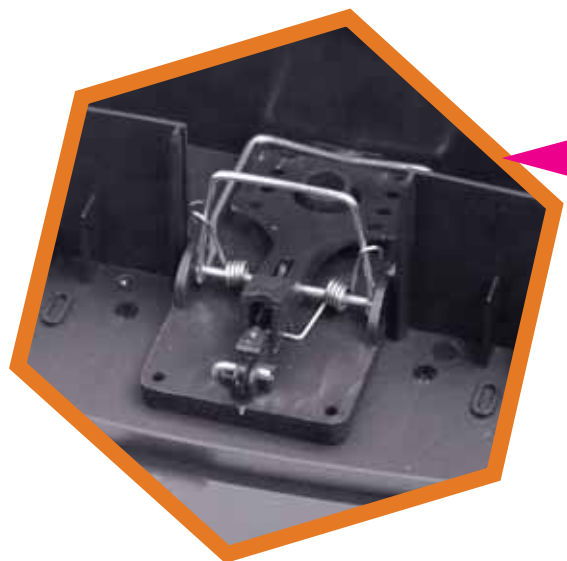


The AF Brush Key

A handy brush in food grade blue nylon with the AF Key attached/installed to the end. This convenient brush is ideal for cleaning loose debris and dust from bait boxes and allows more purchase when opening rat boxes in the cold!

Helland Drinker

Install in the pre-formed slots in the AF Rat Box. A handy way to dispense liquid baits when rats are not feeding on solid baits. Particularly useful where alternative food source is plentiful.



Snap-E Rat Trap/ Trapper T-Rex

Can be used in the AF Rat Box for a quick kill of a single rat.



Patents applied for

The AF Advance Mouse Box

A traditionally sized box with a host of new features, many exclusive to the Advance Mouse Box.

- New user-friendly locking system with the universal AF stainless steel key
- Detachable lid for ease of servicing and record keeping
- Internal "fins" securely hold the most popular block baits on the market
- Feet on the base will help to keep the Advance above water (e.g. cleaners washing floors)
- Fits onto the AF Insect Monitor to form an integrated monitoring/control system
- Can be used with the AF Bait Box Security Shoe. The shoe allows the box to be secured to walls and floors. The box can only be removed by the technician once the box is open
- Has asymmetrical internal baffles – preventing access by human fingers



- Protected lock enhancing tamper resistance
- Optional extra liner tray available for loose grain bait, wax bait and liquid bait
- Universal stainless steel key fits all AF boxes
- Combined key/cleaning brush available as optional extra
- Corporate printing available

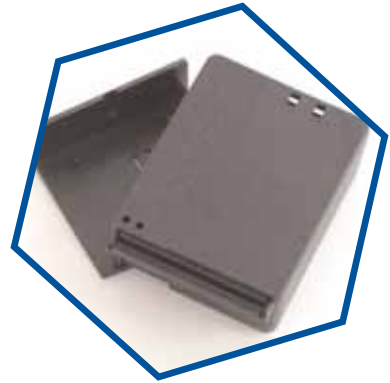


Patents applied for

The AF Mouse Box accessories

AF Bait Shoe

This bait shoe is used to secure the AF Discreet and AF Advance Mouse Box.



AF Advance Mouse Box Liner

This small plastic liner fits exclusively into the AF Advance Mouse Box and accommodates loose grain bait, wax bait and liquid baits. The AF Advance Liner makes cleaning easier when using paste baits and enables the box to be used with either small grain baits or liquid baits. (Only for the Advance Mouse Box).



AF Mouse Box - Cable Fixing

Both the AF Advance and AF Discreet can be held in place using 1.2mm birdwire (NET149). Crimps (NET079) and crimping pliers (BIR018) will be needed with the option of several wall attachments (see diagram). Leave enough wire to allow the box to be lifted and serviced during inspection, usually 40-50cm.



The AF Brush Key

A handy brush in food grade blue nylon with the AF Key attached/installed to the end. This convenient brush is ideal for cleaning loose debris and dust from bait boxes and allows more purchase when opening boxes in the cold!



Patents applied for

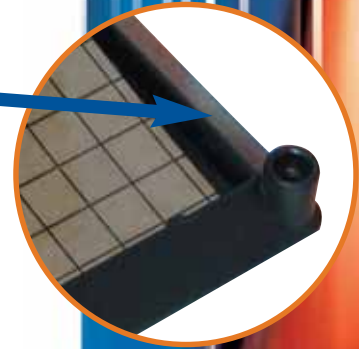
The AF Insect Monitoring System



Flipper lifts out the attractant pad for ease of use



360 degree access and specially designed ramps



Patents applied for

The innovative insect monitoring system

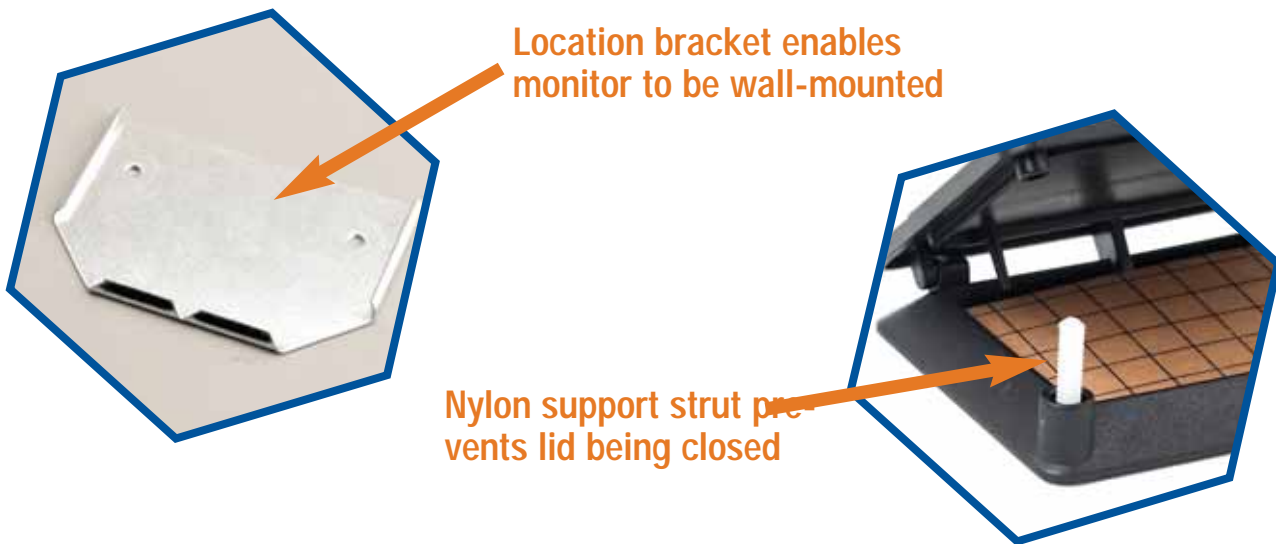


Pads held in place when monitor is vertical

- Slimline profile means it can be placed in narrow gaps, closer to insect activity
- Slimline profile prevents entry by non-target species, such as mice
- Unique "flipper" design automatically lifts out the attractant pad for easy inspection and removal
- 360 degree access and specially designed ramps mean insects can enter trap from all directions
- Insects are unable to detect the sticky surface until it's too late
- The textured surface and optimum ramp angle add to ease of entry and the narrow leading edge does not deter smaller insects
- Will fit on to the AF Advance Mouse Box forming an integrated monitoring/control system
- Location bracket feature is an optional extra
- Corporate printing available

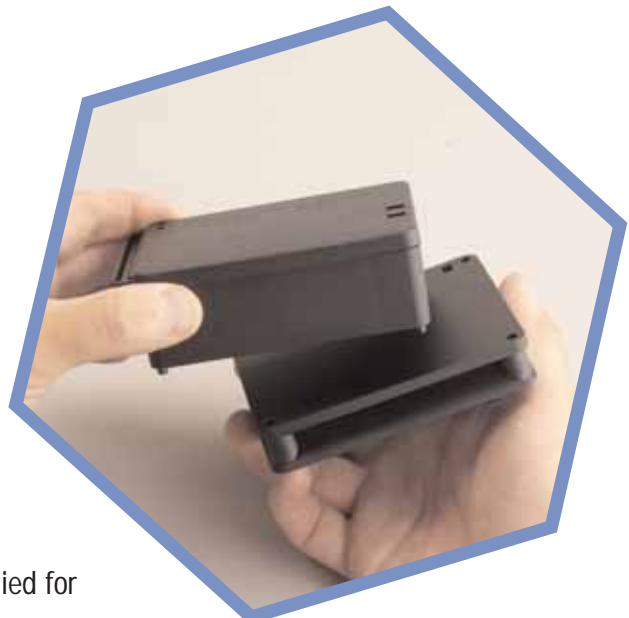
The AF Insect Monitoring Accessories

- AF Location Bracket is exclusive to the AF Insect Monitoring System and ensures that the monitor is firmly secured either on walls or floors.
- AF Nylon Support Struts are a unique feature to the AF Insect Monitoring System. They are to be used when the AF Insect Monitor is affixed to a wall. They prevent the lid being closed, especially useful when the lid must remain open for monitoring purposes.



The AF Integrated Monitoring/Control System

The AF Advance Mouse Box has been designed so that it fits securely onto the AF Insect Monitor, making servicing faster and easier.



Patents applied for

The AF Glue Pads

- Pad contains its own integrated attractant system, eliminating the need for separate attractant tablets
- Special slow release matrix, which remains effective for as long as the pad remains sticky
- Packs are colour coded to help identify the different glue pads
 - Red: Cockroach and crawling insect monitoring pads
 - Green: *Ephestia/Plodia* pheromone monitoring pads
 - Blue: *Tineola bisselliella* pheromone monitoring pads
- Standard size fits most plastic insect monitoring stations
- Printed grids make counting easier



Colour coded packs for ease of identification

The AF Cockroach & Crawling Insect Monitor Glue Pad

- Pads are non-species or sex specific and attract a wide range of insect species in all mobile life stages, making it an invaluable IPM monitoring tool



The AF Glue Pads for *Ephestia/Plodia* (Stored Product Moths) and *Tineola bisselliella* (Clothes Moth)

Two new glue pads for use as an insect monitoring tool for:

- One pad for both *Ephestia* species and *Plodia* species. The monitor is to be used half open and fixed to walls
- *Tineola bisselliella* species to be used with the monitor half open

The attractant in these glue pads is pheromone based, using the same slow release matrix technology as the crawling insect glue pad. No need for fiddly attractant tablets.

AF Nylon Support Struts are an optional additional feature to be used when the AF Insect Monitor is fixed to a wall to prevent the lid being fully closed.



Nylon support strut

Patents applied for



PO Box 358, Cronulla,
NSW Australia 2230

ph:1300 66 56 57
or +612 9527 3033

Fax: 02 9527 3066

Email: info@pestIT.com

www.pestIT.com

The manufacturer reserves the right to alter product specifications without prior notice.

Manufactured by Killgerm Chemicals Limited



The AF Range™ and AF Tuffbox™ are trade marks of Killgerm Group Ltd.