



<b>Where to Use</b>	Any enclosed or semi-enclosed area, opening or building configuration where pest birds are to be excluded.
<b>Target Bird</b>	All species
<b>Bird Pressure</b>	Heavy (see pg. 6 for details)
<b>Material</b>	Polyethylene twine and steel installation hardware
<b>Installation</b>	Netting attached to pre-installed cable system
<b>Installation Level</b>	Involved



1



2



3

1) A strong perimeter cable holds the black 3/4" StealthNet tightly against the wall in a parking structure. 2) StealthNet supported on telescoping poles (p. 28) completely excludes birds from all the rooftop equipment. 3) StealthNet protects an opening on the front of an office building. Notice the attention to detail which insures a completely bird-free system.

### Humane

StealthNet provides a harmless, impenetrable barrier against all pest birds.

### Almost Invisible

Stealthnet is available in black, stone (beige) and white. White netting is available by custom order. The netting is composed of very thin, ultra-strong strands of polyethylene twine.

### Long-Lasting

StealthNet is manufactured using the most advanced technology in the world, and has been developed to withstand a wide range of environmental conditions. Polyethylene is the most ultra-violet resistant netting material available and StealthNet has extra U.V. stabilizers added in its raw materials, creating a net that will last for 10 years or more.

### Installation

StealthNet can be installed using a variety of fastening devices created specifically of your building's needs. Whether it's masonry, steel or wood, we offer a discrete suspension system for a maintenance-free permanent installation.

### Why should you demand StealthNet?

Six strands of polyethylene, each 12/1000" (hence the name 12/6), are wrapped rope-like into one strong, rot-resistant, U.V. protected twine. With a breaking strength of 44 lbs. per twisted strand, StealthNet is the strongest polyethylene netting available in the world.

StealthNet's U.V.-treatment and color pigmentation are embedded in the composition (not just dipped), making the net more resistant to the effects of the sun with a more consistent coloring throughout.

### Benefits

- Effective against all bird species
- Highly resistant to ultraviolet rays
- Available in a variety of colors
- Available in 7 standard & cut to your custom sizes
- Nearly invisible in most situations
- Low-profile installation system
- Twine is twisted and knotted
- Will not rot or absorb water
- Protecting structures worldwide
- Specified on historical properties



Three sizes of StealthNet offer complete exclusion

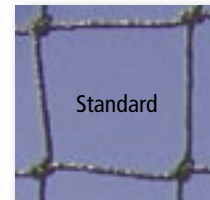
**2" Mesh**  
Pigeons and larger birds



**1-1/8" Mesh**  
Starlings, grackles, blackbirds, etc.



**3/4" Mesh**  
Sparrows, swallows & other small birds



Use Standard netting for jobs under 25' x 25'.  
Use Heavy Duty nets for larger jobs.

**StealthNet Colors**



White Stone Black

**Warranty**

Black StealthNet: 7 years  
Stone & White StealthNet: 3 years

**No-Flame StealthNet**



**NEW!**

- Ideal for:
- Condos/Apartments
  - Hotels
  - Aircraft Hangars
  - Warehouses
  - All sensitive applications

Bird Barrier's new No-Flame StealthNet conforms to NFPA 701, which states that the net is self extinguishing (it will put itself out when exposed to an open flame). This net is ideal for interior applications like airplane hangars, sports facilities and other sensitive areas. It is also ideal for netting jobs around residential settings, like condos and apartment buildings. The No-Flame StealthNet is distinguished by a blue strand twisted in with the black strands.

**Conforms to NFPA 701**

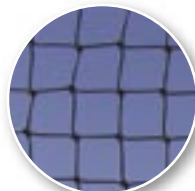
**Demand the Blue Strand!**

- 3/4" Black Flame-Proof 25' x 25'
- 3/4" Black Flame-Proof 50' x 50'
- 3/4" Black Flame-Proof 50' x 100'
- 2" Black Flame-Proof 25' x 25'
- 2" Black Flame-Proof 50' x 50'
- 2" Black Flame-Proof 50' x 100'

- N1F-B110/645212
- N1F-B220/645213
- N1F-B240/639884
- N3F-B110/673001
- N3F-B220/673000
- N3F-B240/672998

**NEW!**

See page 29 for more specialty nets:



Bat Net



Mist Nets



Plastic Net

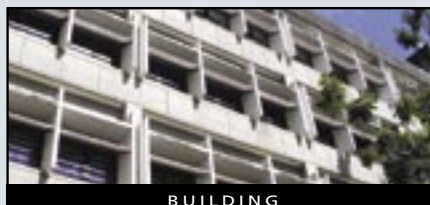
**» Campus Evicts Unwanted Guests**

**SUCCESS STORY**

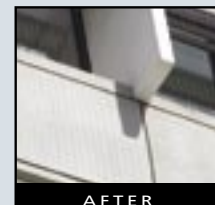
**» Project:** College dormitory **» Species:** Starlings **» Problem:** Thousands of aggressive black birds were nesting in decorative louvers and entering the dorm rooms

**Impact:** During the hot summer months the stench from the nests and droppings permeated the dorm rooms. Administrators worried bacteria from the droppings would spread diseases to the students and faculty.

**Solution:** The entire dormitory was pressure washed. Black StealthNet (p. 22) was installed tight and flush against the facade of the building, effectively blocking access to the pesky birds. Passersby rarely notice the netting; it's almost invisible. ★★★★★



BUILDING



AFTER

StealthNet Sizes	25' x 25'	25' x 50'	25' x 75'	50' x 50'	50' x 75'	50' x 100'	100' x 100'
<b>3/4" Standard</b>							
Black	N1-B110/645088	N1-B120/645089	N1-B130/645090	N1-B220/645091	N1-B230/645092	N1-B240/645093	N1-B310/674228
Stone	N1-S110/645095	N1-S120/645096	N1-S130/645098	N1-S220/645099	N1-S230/645100	N1-S240/645101	N1-S310/680696
<b>3/4" Heavy Duty</b>							
Black	N1X-B110/638013	N1X-B120/638014	N1X-B130/638015	N1X-B220/638016	N1X-B230/638017	N1X-B240/638018	N1X-B310/613947
Stone	N1X-S110/638020	N1X-S120/638021	N1X-S130/638022	N1X-S220/638023	N1X-S230/638024	N1X-S240/638025	N1X-S310/613948
White	N1X-T110/650684	N1X-T120/650685	N1X-T130/650687	N1X-T220/650689	N1X-T230/650690	N1X-T240/650693	N1X-T310/653036
<b>1-1/8"</b>							
Black	N2-B110/636458	N2-B120/637919	N2-B130/668364	N2-B220/637922	N2-B230/639159	N2-B240/639847	N2-B310/645074
Stone	N2-S110/645103	N2-S120/645209	N2-S130/649943	N2-S220/656560	N2-S230/672973	N2-S240/673013	N2-S310/673016
<b>2"</b>							
Black	N3-B110/638033	N3-B120/638034	N3-B130/637925	N3-B220/638035	N3-B230/638036	N3-B240/638037	N3-B310/672774
Stone	N3-S110/638039	N3-S120/638040	N3-S130/638041	N3-S220/638042	N3-S230/638043	N3-S240/638044	N3-S310/102720
White	N3-T110/650754	N3-T120/650757	N3-T130/650758	N3-T220/650759	N3-T230/650760	N3-T240/650761	N3-T310/102920

» Custom-Cut Nets

Custom-cut nets are available with no minimum cutting fee. The cutting fee is included in the price per square foot.

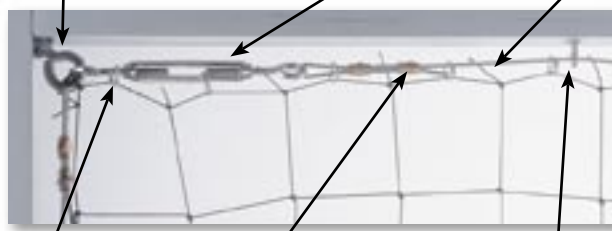


3/4" Black StealthNet Std. Custom	N1-BCUS/645094
3/4" Stone StealthNet Std. Custom	N1-SCUS/645102
3/4" Black StealthNet H.D. Custom	N1X-BCUS/638019
3/4" Stone StealthNet H.D. Custom	N1X-SCUS/638026
3/4" White StealthNet H.D. Custom	N1X-TCUS/650695
1-1/8" Black StealthNet Custom	N2-BCUS/638031
1-1/8" Stone StealthNet Custom	N2-SCUS/638032
2" Black StealthNet Custom	N3-BCUS/638038
2" StealthNet Stone Custom	N3-SCUS/638045
2" White StealthNet Custom	N3-TCUS/650762
4" Black StealthNet 50' x 100'	N4-B240/672999
4" Black StealthNet 100' x 100'	N4-B310/676597
4" Black StealthNet Custom	N4-BCUS/645105

**Installation of Nets**

StealthNet is attached to a 2mm perimeter cable which is supported by a wide variety of intermediate and corner attachments designed for masonry, wood or steel. The cable is tensioned using turnbuckles and the netting is attached to the cable using net rings.

Corner attachment, p. 26 Turnbuckle, p. 25 Perimeter Cable, p. 25



Net Ring, p. 25 Ferrule, p. 25 Intermediate attachment, p. 27

**Technical Specifications**

The twine is knitted into sheets on a net-making machine. A pressure of 5 tons is then applied to the net to stretch it into squares and tighten the knots. The net is then heat set in an enclosed system at a temperature of 200 F for 3 minutes.

Standard mesh sizes are 3/4", 1-1/8" and 2", but other mesh sizes can be manufactured. Nets can be custom made in any length or width. For ease of installation, corners and long sides are marked. StealthNet is available in stock colors of Black, Stone (beige) and Translucent, with White available by special order.

**Thermal Properties**  
Softening point in the region of 250° F.

**Effect of High Temperature**  
Melting point in excess of 270° F. Burns with difficulty. May be heated for short periods up to 600° F.

**Effect of Low Temperatures**  
Polyethylene retains its flexibility at very low temperatures and does not become rigid under freezing conditions.

**Flammability**  
Burns slowly in air (ASTM Test 1.0l/min); fine filaments tend to melt and drop away before propagating a flame.

**Chemical Properties**  
Polyethylene, a paraffin hydrocarbon, is chemically inert and is highly resistant to a wide range of chemicals at ordinary temperatures. It does not rot or absorb water. Polyethylene fibers have a high resistance to acids and alkalis at all concentrations, but are attacked by nitric acid. Insoluble in most common organic solvents at room temperature.

**Electrical Properties**  
Polyethylene is an outstanding electrical insulator, especially to high frequency currents.

**Insects and Micro-organisms**  
The fibers are not ingested by insects and are completely resistant to bacteria, mildew and other micro-organisms, making them virtually rot proof.

**Effects of Wind**  
Wind passes effortlessly through StealthNet, although smaller mesh sizes are effected by wind to a larger degree.