

New Flex-Track Connector Installation Instructions



Bird Barrier's new Bird-Shock Quick Connectors are fast to install, attractive and incredibly durable. Made from UV stabilized, durable plastic they are guaranteed to perform on the job for at least five years. The aggressive teeth dig deeply into the braid and PVC for a long-term electrical connection.



Straight Connectors - New Features

- Male conductors for connecting to lead wire
- Smaller and lower profile than previous model
- Positive locking tabs will not open on their own
- Faster and easier to install



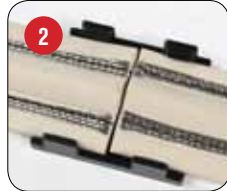
Corner Connectors - New Features

- Ready-made 90 degree angle
- Ultra low profile
- Conductors on top shock birds
- Easy cut track at 90, no messing with 45 degree cuts

Connecting tracks together using the Straight Connector



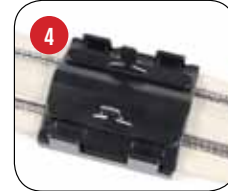
Place base down in line with the Flex-Track. The base can be glued or screwed in place, but neither are required as the glued track will hold it in place.



Place both ends of the Flex-Track inside the base, making sure the ends meet in the middle of the base. Make sure the strands of stainless steel wire do not stray away from the braid.



The top has two conductive elements included; make sure they are both in position. Lay the top down on the bottom part and press hard until all four tabs snap in place.



The male tabs can be bent down and away from each other if they are not to be used.



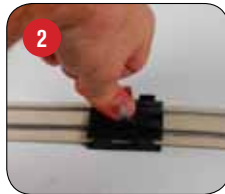
To open the part insert a flat screwdriver as shown and gently twist the tabs away from the part. Prying two tabs on the same side is generally all that is needed to remove the top.

Connecting wires to the track using the Straight Connector

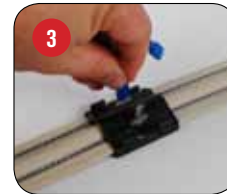
Insert the Straight Connector at any point where an electrical connection is desired. This method can be used for connecting to the power charger, or jumping from track to track.



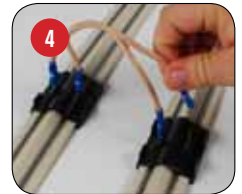
Lift up the track and slide the bottom of the Straight Connector under the track in the desired position.



Press the top of the Connector down until all four tabs snap in place.



Connect the Lead Wire to the male tabs with female connectors (included with the track).



Use two connectors to jump from track to track.

Making corners using the Corner Connector



Place base down in line with the Flex-Track. The base can be glued or screwed in place, but neither are required as the glued track will hold it in place.



Cut each side of the Flex-Track to the correct length; there is no need to cut the track at a 45-degree angle. Lay the tracks down into the base as shown.



The bottom features sharp connectors that must dig into the braids on the top of the Flex-Track.



Insert the hook-tab on the top under the bar on the outer corner of the bottom part. Then firmly press down so that all four tabs lock in place.



To open the part insert a flat screwdriver as shown and gently twist the tabs away from the part. Prying two tabs on the same side is generally all that is needed to remove the top.