



# Bird-Shock® Flex-Track®

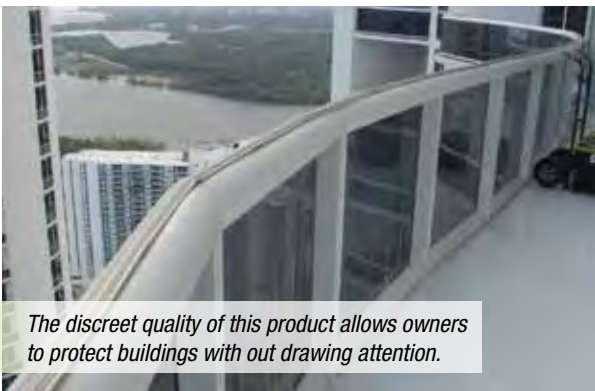


## SPECIFICATIONS

<b>WHERE TO USE</b>	Any surface where total exclusion is the goal, and low visibility is key; parapets, roof peaks, beams, ledges.
<b>TARGET BIRD</b>	All species
<b>BIRD PRESSURE</b>	All pressure levels
<b>MATERIAL</b>	UV-stabilized PVC and Stainless Steel
<b>INSTALLATION</b>	Track glues to surface, electrical connectors allow current to flow from one track to the next.
<b>INSTALLATION LEVEL</b>	Somewhat involved



*Bird-Shock Flex-Track's flexible PVC base makes it a versatile solution for many applications.*



*The discreet quality of this product allows owners to protect buildings with out drawing attention.*



*The width of the ledge and the size of the birds determine how many rows of track are needed.*

### patented

Bird-Shock Flex-Track is so good, and unique, it was granted a patent by the US Patent and Trademark Office.

### flexible and adaptable

This low-profile electrified track conforms to any architectural configuration. Flex-Track curves up and down, and side to side; and the stainless steel braid gently follows the UV-stabilized PVC base without wrinkling.

### almost invisible

At only one-quarter of an inch high, and available in five different colors, Flex-Track is hard to see close-up, and invisible from the distance. It is not seen looking up from below.

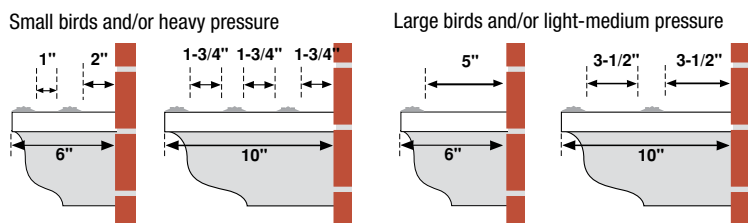
### long-lasting

Made from UV-stabilized PVC, and Stainless Steel, Flex-Track will be in service far longer than its five-year warranty.

### humane

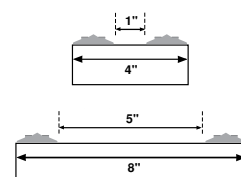
The intermittent shock is memorable, but does not hurt the birds; it simply teaches them to stay away, long-term.

### recommended spacing



One row of Flex-Track can protect the same width ledge as multiple rows of other products. Labor and material are therefore much less. Often just one row on the outer edge is enough.

### Double-sided ledges



Anti-water damming pads stuck every 12 inches will allow water to flow under the track. 10 pads are included with each roll of track.





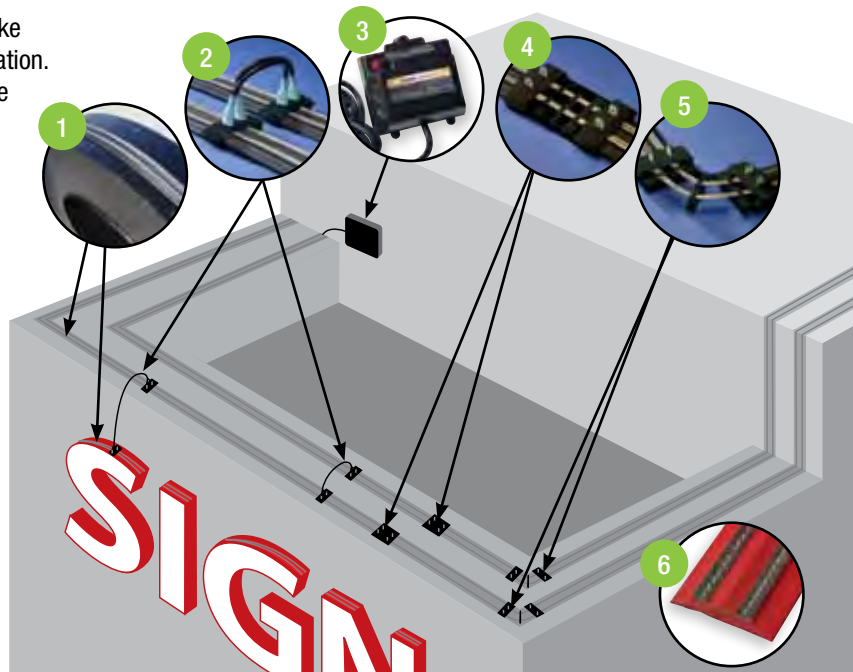
# Bird-Shock® Flex-Track®

A fully-integrated system



Bird-Shock Flex-Track is a comprehensive family of parts that make up a fully integrated system. Bird-proof any architectural configuration. Special connectors, wires, charger units and the track itself can be customized to protect both regular and irregular shaped surfaces.

- 1) Flex-Track protects straight ledges, and curves easily to protect sign letters.
- 2) Jumpers snap quickly to the track, making it easy to power multiple tracks.
- 3) A charger unit mounts to the building and sends intermittent power down the two conductors.
- 4) Quick connectors are used every 50 feet, or wherever else connections are needed.
- 5) Corner Quick connectors can be curved to any angle.
- 6) New "Sign-Red" Flex-Track matches the red of most retail signs.



**Important Note:** Electrified systems are active systems. They require regular maintenance.

### Flex-Track: A Professional System

Flex-Track is changing the face of the bird control industry. For the first time ever one product is able to protect a wide variety of surfaces from all bird species, while at the same time being virtually invisible, and incredibly durable.

Professionals who sell and service Flex-Track have a leg up on the competition for the following reasons:

- Flex-Track is the lowest profile product available, it's almost invisible when properly installed. Building owners are actually paying to have spikes replaced with Flex-Track.
- Signs - Bird control specialists can protect sign letters from all bird species, invisibly.
- One row of Flex-Track can protect the same width ledge as multiple rows of other products. Labor and material are therefore much less. Often just one row on the outer edge is enough.

### Quick Connectors Save You Time

Labor is the most expensive part of bird control; the standard male/female crimps that come with Flex-Track take extra time. These Quick Connectors cut installation time down dramatically. Call today for a free sample kit. See the next page for prices and part numbers.



### Flex-Track Power Indicator

Attach these to the track and the building. Flashing indicates the system is functioning properly. Can be seen from distance at night.



Power Indicator      BS-TE15      673147

Talk to an Expert. We will help you succeed: 800-503-5444.



**Material Estimator:**  
[www.birdbarrier.com/estimator](http://www.birdbarrier.com/estimator)



Three rows of Flex-Track protect the courtyard below this ledge.



Flex-Track is very discreet on this complicated decorative architecture.



# Bird-Shock® Flex-Track® Connectors

Installation video at [www.birdbarrier.tv](http://www.birdbarrier.tv)

## Bird-Shock Flex-Track

The tracks come in 50-foot lengths. Each roll includes 11 Straight Connections and 9 Corner Connections, which will accommodate normal applications.

Black	BS-FB50	733358
Beige	BS-FBG50	733360
Brick Red	BS-FR50	733359
Gray	BS-FG50	733361
Sign-Red	BS-FSR50	646025

### Bulk Pricing - Call for price breaks on the following quantities.

5 Rolls = 250 ft.  
 10 Rolls = 500 ft.  
 25 Rolls = 1,250 ft.  
 100 Rolls = 5,000 ft.

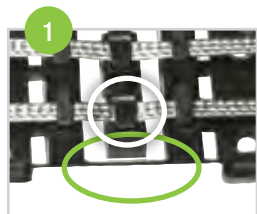


Call us first, we'll help you win your big projects. Assistance with material selection, estimating, training, and price support.

## Straight/Corner Connectors

The smart new part that makes straight connections and corners a snap. Thread the SS Braid through the guides and press the tabs down in the center to lock in place. Slide the track under the straps and press the Quick-Lock tops down.

Straight/Corner Connector (25)      BS-Q00    674211



## Making Corners

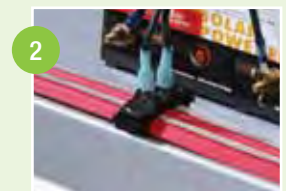
1. Lock the braid down with the locking tabs (white circle) and cut out the brace (green circle).

2-3. Bend the Connector open to the position needed. Glue the Connector to the surface.

## Quick-Tap Jumpers

Connect a female wire connector to the males that stick up from each part. Ideal for connecting to other tracks (1) or to the charger unit (2). 30-pack.

Quick-Tap Jumpers      BS-Q01    674210



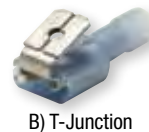
## Standard Connectors

Some complicated projects need more connections. The kits below are available in addition to the standard set that comes with the flex-track. **A.** Corner (100 male, 100 female). **B.** T-Junction (100 male, 100 female, 50 piggyback). **C.** Straight (100 male, 100 female). **D.** Female Snap Tap (50 taps)

A. Corner Connector Kit (ea.)	BS-Q20	733347
B. T-Junction Kit (ea.)	BS-Q10	733345
C. Straight Connector Kit (ea.)	BS-Q15	733346
D. Connector Female Snap Tap	BS-QSK	654789



A) Corner Connector



B) T-Junction



C) Straight Connector



D) Female Snap Tap



## Flex-Track Lock-Downs

Can't glue the Flex-Track? Screw these down every 12", lay the track down the center and lock the top in place. 50-pack.

Lock-Downs (50)      BS-Q02    674228

## Flex Track Lead-out Wire

Twisted copper, 14 gauge double wire is easy to cut, strip & crimp. Available in 3 colors to match your job. 50 & 250 ft. rolls.

Lead Wire, black (50 ft.)	BS-LW10	733355
Lead Wire, black (250 ft.)	BS-LW65	
Lead Wire, beige (50 ft.)	BS-LW30	733357
Lead Wire, beige (250 ft.)	BS-LW60	
Lead Wire, gray (50 ft.)	BS-LW15	733356
Lead Wire, gray (250 ft.)	BS-LW70	



## Lead Wire Guides

New, smaller and black for a less visible, tighter job. 100/pk.

Lead Wire Guides (100)      BS-LW45    639860



## Bird Barrier Bond

Bird Barrier Bond can be used to glue down Flex-Track to clean surfaces.

Application Guidelines: 10.2 oz. bond installs 35 ft. of track

New Bond 10.2 oz. (ea.)	HA-BB03	776954
Original Bond 10.2 oz. (ea.)	HA-BB04	776732
Original Bond 3.75 oz. (ea.)	HA-BB02	632018
Original Bond 1.25 oz. (ea.)	HA-BB01	632253



See page 46 for important Bond information.



## STANDARD CHARGERS

### Small 120v. Plug-In Charger - Up to 500 ft. of track

Weatherproof, can be mounted outside (but make sure the plug itself is in a weatherproof housing).

Input Voltage: 120 Vac  
Output Voltage (max): 9kV +/- 10%  
Output Pulse Width at 500 Ohms: 100 uS  
Output at 500 Ohms: 2.4kV, 0.16J



Sm. Plug-In Charger BS-CP30 632254

### Small 4v. Solar Charger - Up to 300 ft.

Input Voltage: 4Vdc  
Output Voltage (max): 8kV (+/-) 20%  
Output Pulse Width at 500 Ohms: 50uS  
Output at 100 Ohms: 3.5A



Sm. 4v. Solar Charger BS-CS00 649940  
Replacement Battery BS-CS05 649939


### Small 12v. Solar Charger - Up to 500 ft.

Ideal for smaller projects. Features connectors on the bottom and an on/off switch.

Input Voltage: 12Vdc  
Output Voltage (max): 8.6kV +/- 10%  
Output Pulse Width at 500 Ohms: 25uS  
Output at 500 Ohms: 4.0kV, 0.14J



Sm. 12v. Solar Charger BS-CS30 655507  
Replacement Battery BS-CS25 637923

 Attach battery leads and charge for 2 days before activating

## LARGE BIRDS / LARGE JOBS

These powerful chargers are capable of handling large runs of Flex-Track. They require specific installation methods and the use of a digital track tester.

**NOTE:** Installation of these units without regard to the installation instructions can result in visible and audible arcing or sparking. Please use appropriate care and call our specialists for job-specific recommendations.

### Large 120v. Plug-In Charger - Up to 2,500 ft.

This charger is weatherproof, but must be plugged into a weatherproof receptacle. It features a blinking indicator light when operating. Powerful enough for most jobs.

Input Voltage: 120 Vac  
Output Voltage (max): 8.8kV +/- 10%  
Output Pulse Width at 500 Ohms: 75uS  
Output at 500 Ohms: 5.6kV, 1.3J



Lg. Plug-In Charger BS-CP25


### Large 12v. Solar Charger - Up to 1,000 ft.

This solar powerhouse delivers plenty of shock and can be installed anywhere that gets several hours of sunlight every day.

Input Voltage: 12Vdc  
Output Voltage (max): 8.6kV (+/-) 10%  
Output Pulse Width at 500 Ohms: 25uS  
Output at 500 Ohms: 5.4kV, 0.33J



Lg. 12v. Solar Charger BS-CS20 674209  
Replacement Battery BS-CS25 637923

 Attach battery leads and charge for 2 days before activating

## Digital Voltage Tester

Make sure your system is sending the correct amount of electricity. Tester reads in 100-volt increments.

Digital Voltage Tester BS-TD10 649947



## Warning Labels

Bold, plastic warning labels should be placed prominently. Glue or screw to the ledge or side of the building. 10/pack.



Warning Labels (10) BS-WL10 652256

## Connector Crimp Tool

Solid connections are a must for a long-lasting application. This tool delivers the perfect crimp.

Connector Crimp Tool (ea.) TO-Q20 733351



## Deluxe Wire Stripping Tool

This elegant tool easily strips wires, completely. It grabs, cuts and pulls the wire, you just squeeze. Use the #10 or #8 opening.

Deluxe Wire Stripping Tool TO-Q15 636427



## 2 D-cell Battery Charger

Up to 200 feet of track

Ideal for small jobs like signs that can't justify the cost of a large charger. Two D-Cell batteries will power the system for two months.

Input Voltage: 3 VDC, 13 mA  
Output Voltage: 7.5 kV (+/-) 20% open circuit intermittent DC output

Battery Charger BS-CS15 674219



## Flex-Track Battery Trickle Charger

Charge Solar Charger batteries quickly or during extended periods of cloudy weather.

Trickle Charger BS-TE30



## Flex-Track Power Indicator

Attach these to the track and the building. Flashing indicates the system is functioning properly. Can be seen from distance at night.

Voltage Indicator BS-TE15 673147



## Roof Ridge Support

Flex Track Roof Ridge Supports make it easier to glue down Flex Track on roof peaks. Glue supports to the roof peak, then glue Flex-Track to the roof and supports.

Roof Ridge Supports (50) BS-RR05

